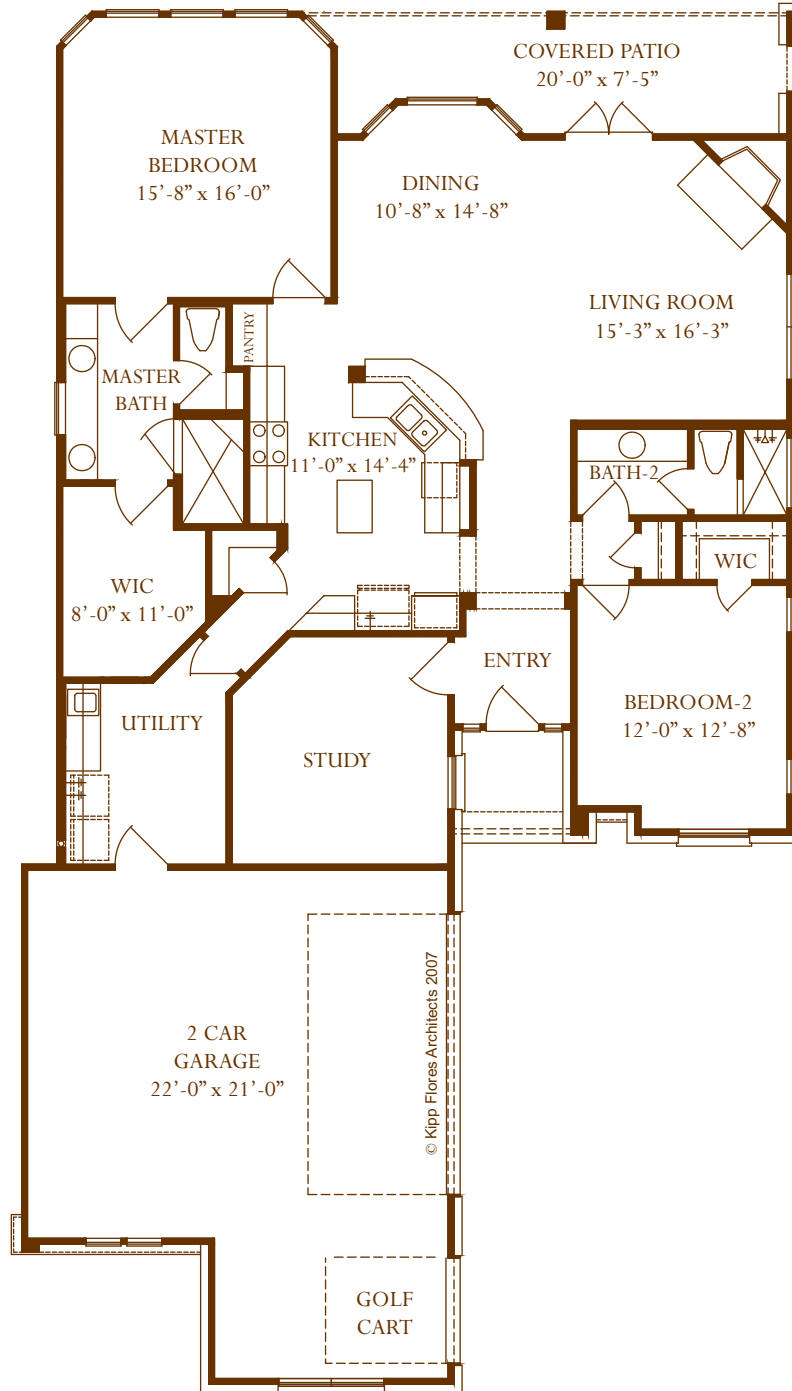




ROCK BARN AT COMANCHE TRACE
KERRVILLE, TEXAS

THE CATANIA



APPROXIMATE TOTAL SQUARE FEET 1,820

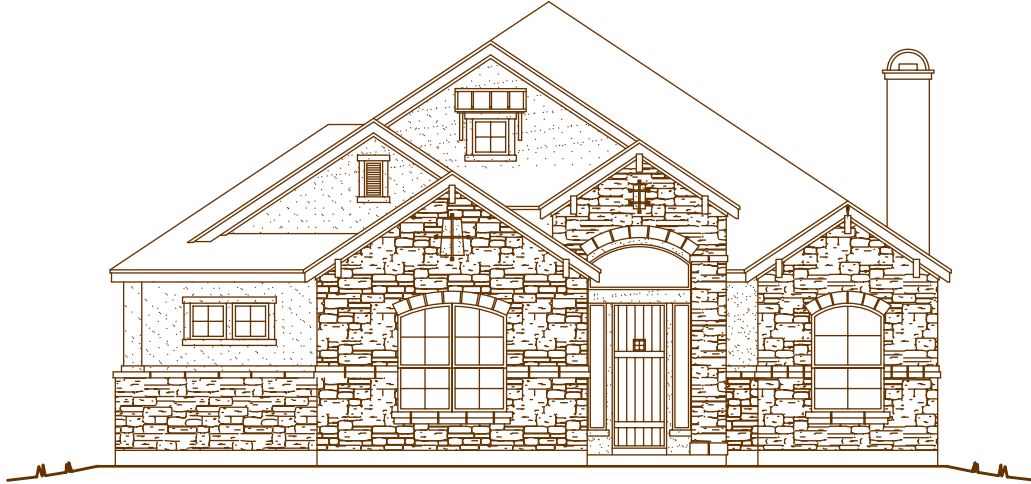
A new home community by Origin Homes

WWW.ORIGINHOMESINC.COM



ROCK BARN AT COMANCHE TRACE
KERRVILLE, TEXAS

THE CATANIA



FEATURES

- DESIGNER 8' KNOTTY ALDER WOOD FRONT DOOR
- PENT ROOF DETAIL INCLUDED ON SEVERAL PLANS
- 42" WOOD BURNING FIREPLACE WITH NATIVE STONE SURROUND
- CARDELL KNOTTY ALDER KITCHEN CABINETS
- STAINLESS STEEL KITCHENAID APPLIANCES
- GRANITE COUNTERTOPS IN YOUR KITCHEN & ALL BATHROOMS
- TILE FLOORING: ENTRY, LIVING, DINING, UTILITY AND ALL BATHROOMS
- CUSTOM LIGHTING PACKAGE
- HIGH END BATHROOM FIXTURES
- MASTER BATHROOM DOUBLE VANITY SINKS
- MASTER BATHROOM GLASS SHOWER ENCLOSURE
- SPACIOUS WALK-IN SHOWERS
- DESIGNER SELECTION OF 8' INTERIOR DOORS
- CUSTOM WOOD TRIM DETAIL THROUGHOUT HOME
- COVERED FRONT & REAR PORCHES WITH WOODEN V-GROOVE STAINED CEILING DETAIL
- UPSCALE STRUCTURED WIRING PACKAGE FOR ENTERTAINING
- PROFESSIONAL LANDSCAPING PACKAGE & IRRIGATION SYSTEM
- ROCK BARN DRIVE IS NEARLY COMPLETED SECTION OF COZY CUSTOM HOMES
- IN COMANCHE TRACE....JUST STEPS FROM THE COMANCHE TRACE GOLF COURSE.

Meet with our Customer Relations Team to get more information about our Origin Homes Custom Home details.

A new home community by Origin Homes

WWW.ORIGINHOMESINC.COM